

Name: _____



Mystery MESSAGE

Place the correct note name in the line below to discover the mystery message!



A musical staff with a treble clef. There are two notes: one on the G line (4th line) and one on the B line (5th line).

M _ Y T H _

A musical staff with a treble clef. There are four notes: one on the C line (1st line), one on the E line (2nd line), one on the G line (4th line), and one on the B line (5th line).

_ O R _ _ _

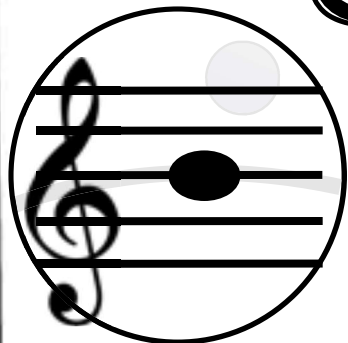


WITH YOU!



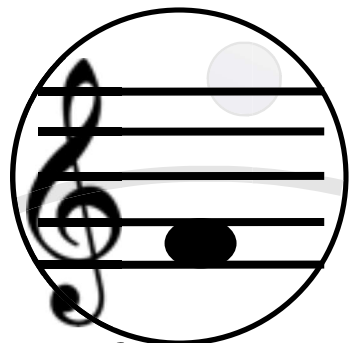
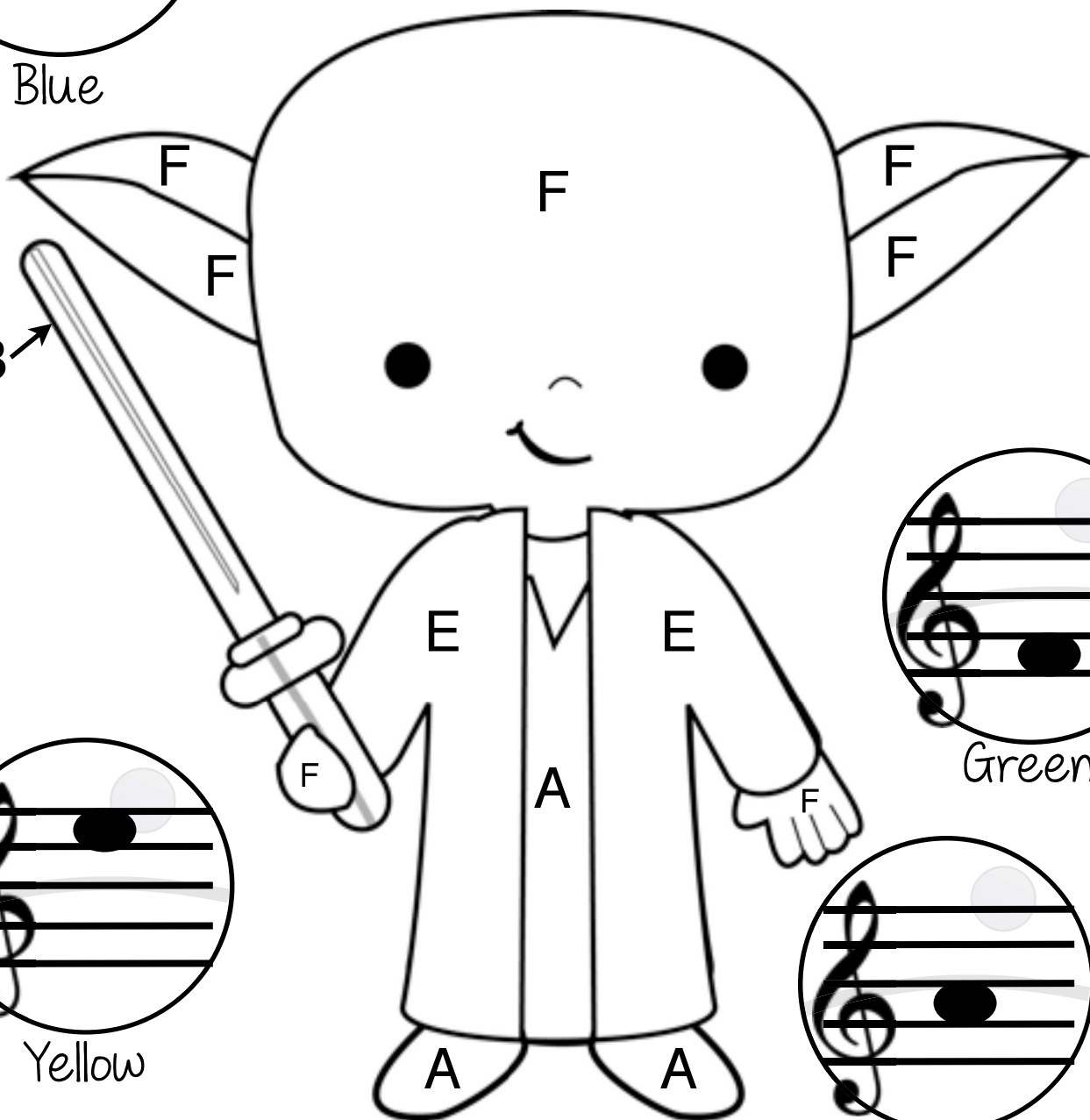
Name: _____

Color by Note

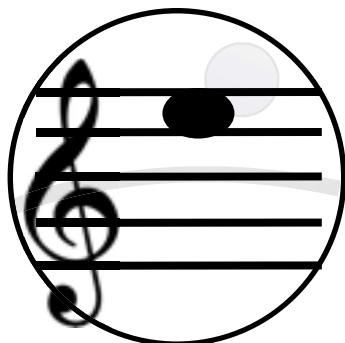


Blue

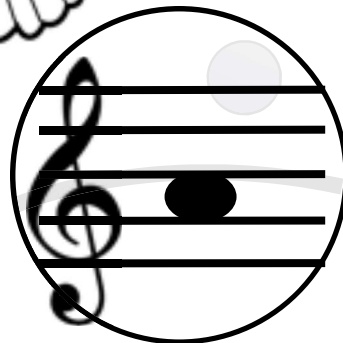
Name the note on each staff.
Color Yoda according to the correct note name.



Green



Yellow



Brown